

# GREAT CENTRAL RAILWAY

## G.W.C. BOGIE PASSENGER ENGINES Nos 1095 - 1104

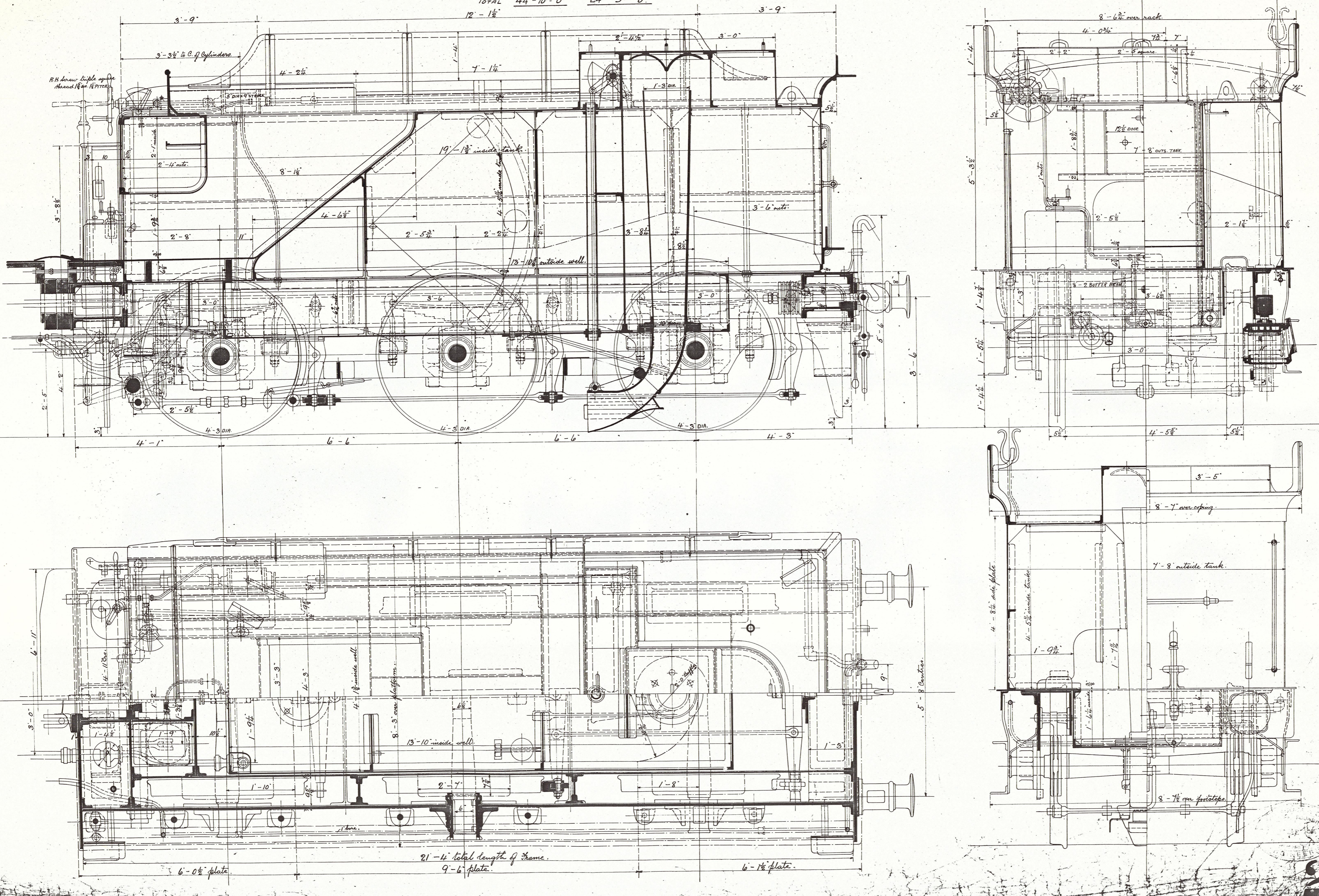
MAKERS PROGRESSIVE Nos 4816 - 4825

WEIGHT OF TENDER ON RAILS.

	FULL			EMPTY		
	T.	C.	Q.	T.	C.	Q.
FRONT BOGIE	15	5	0	8	6	0
MIDDLE	14	11	2	8	13	0
HIRO	14	13	2	7	10	0
<b>TOTAL</b>	<b>44</b>	<b>10</b>	<b>0</b>	<b>24</b>	<b>9</b>	<b>0</b>

DRAWING No.  
MAKERS ORDER No. 9458

Property of the Great  
Central Railway  
Society Archive  
Item No: L/310-8



COPYRIGHT BRITISH RAIL  
NOT FOR PUBLICATION OR ANY  
FORM OF REPRODUCTION

1241